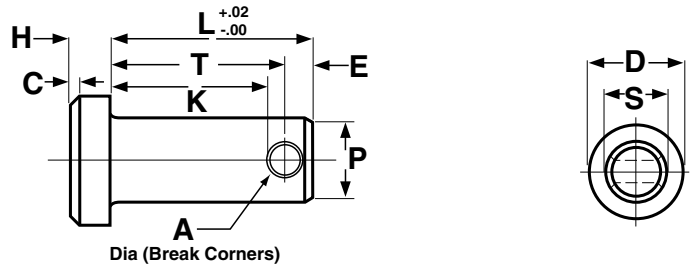




# Pins

## Clevis Pins



| Nominal Size | S              |       | D             |      | H           |      | C            | A             |       | P              |      | L          | T                      |       | E                 | K                        | Recommended Cotter Pin Nominal Size |
|--------------|----------------|-------|---------------|------|-------------|------|--------------|---------------|-------|----------------|------|------------|------------------------|-------|-------------------|--------------------------|-------------------------------------|
|              | Shank Diameter |       | Head Diameter |      | Head Height |      | Head Chamfer | Hole Diameter |       | Point Diameter |      | Pin Length | Head to Center of Hole |       | End to Center Ref | Head to Edge of Hole Ref |                                     |
|              | Max            | Min   | Max           | Min  | Max         | Min  | ±0.01        | Max           | Min   | Max            | Min  | Basic      | Max                    | Min   | Basic             | Min                      |                                     |
| 3/16         | 0.186          | 0.181 | 0.32          | 0.30 | 0.07        | 0.05 | 0.02         | 0.088         | 0.073 | 0.15           | 0.14 | 0.58       | 0.504                  | 0.484 | 0.09              | 0.440                    | 1/16                                |
| 1/4          | 0.248          | 0.243 | 0.38          | 0.36 | 0.10        | 0.08 | 0.03         | 0.088         | 0.073 | 0.21           | 0.20 | 0.77       | 0.692                  | 0.672 | 0.09              | 0.628                    | 1/16                                |
| 5/16         | 0.311          | 0.306 | 0.44          | 0.42 | 0.10        | 0.08 | 0.03         | 0.119         | 0.104 | 0.26           | 0.25 | 0.94       | 0.832                  | 0.812 | 0.12              | 0.752                    | 3/32                                |
| 3/8          | 0.373          | 0.368 | 0.51          | 0.49 | 0.13        | 0.11 | 0.03         | 0.119         | 0.104 | 0.33           | 0.32 | 1.06       | 0.958                  | 0.938 | 0.12              | 0.878                    | 3/32                                |
| 7/16         | 0.436          | 0.431 | 0.57          | 0.55 | 0.16        | 0.14 | 0.04         | 0.119         | 0.104 | 0.39           | 0.38 | 1.19       | 1.082                  | 1.062 | 0.12              | 1.002                    | 3/32                                |
| 1/2          | 0.496          | 0.491 | 0.63          | 0.61 | 0.16        | 0.14 | 0.04         | 0.151         | 0.136 | 0.44           | 0.43 | 1.36       | 1.223                  | 1.203 | 0.15              | 1.127                    | 1/8                                 |
| 5/8          | 0.621          | 0.616 | 0.82          | 0.80 | 0.21        | 0.19 | 0.06         | 0.151         | 0.136 | 0.56           | 0.55 | 1.61       | 1.473                  | 1.453 | 0.15              | 1.377                    | 1/8                                 |
| 3/4          | 0.746          | 0.741 | 0.94          | 0.92 | 0.26        | 0.24 | 0.07         | 0.182         | 0.167 | 0.68           | 0.67 | 1.91       | 1.739                  | 1.719 | 0.18              | 1.628                    | 5/32                                |
| 7/8          | 0.871          | 0.866 | 1.04          | 1.02 | 0.32        | 0.30 | 0.09         | 0.182         | 0.167 | 0.80           | 0.79 | 2.16       | 1.989                  | 1.969 | 0.18              | 1.878                    | 5/32                                |
| 1            | 0.996          | 0.991 | 1.19          | 1.17 | 0.35        | 0.33 | 0.10         | 0.182         | 0.167 | 0.93           | 0.92 | 2.41       | 2.239                  | 2.219 | 0.18              | 2.128                    | 5/32                                |

ASME B18.8.1

**The value-added source for quality bolts, screws, nuts, washers and other industrial fasteners.**

3211 West 9th Street, Trainer, PA 19061-5242 TOLL FREE: 1-800-662-7459 LOCAL: 610-485-5700 FAX: 610-485-5877

E-MAIL: [sales@coburnmyers.com](mailto:sales@coburnmyers.com)