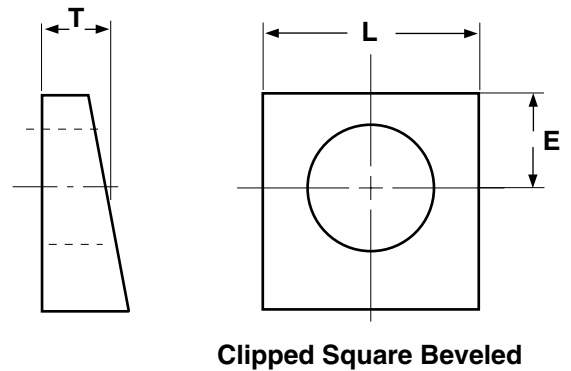


Washers

Beveled Washers



Nominal Washer Size		Inside Diameter - A			L Minimum Side Length	T Thickness	E Minimum Edge Distance
		Basic	Tolerance				
			Plus	Minus			
1/2	0.500	0.531	0.0313	0	1.750	0.313	0.438
5/8	0.625	0.688	0.0313	0	1.750	0.313	0.547
3/4	0.750	0.813	0.0313	0	1.750	0.313	0.656
7/8	0.875	0.938	0.0313	0	1.750	0.313	0.766
1	1.000	1.125	0.0313	0	1.750	0.313	0.875
1-1/8	1.125	1.250	0.0313	0	2.250	0.313	0.984
1-1/4	1.250	1.375	0.0313	0	2.250	0.313	1.094
1-3/8	1.375	1.500	0.0313	0	2.250	0.313	1.203
1-1/2	1.500	1.625	0.0313	0	2.250	0.313	1.313

ASME B18.2.6-1996

The value-added source for quality bolts, screws, nuts, washers and other industrial fasteners.

3211 West 9th Street, Trainer, PA 19061-5242 TOLL FREE: 1-800-662-7459 LOCAL: 610-485-5700 FAX: 610-485-5877

E-MAIL: sales@coburnmyers.com