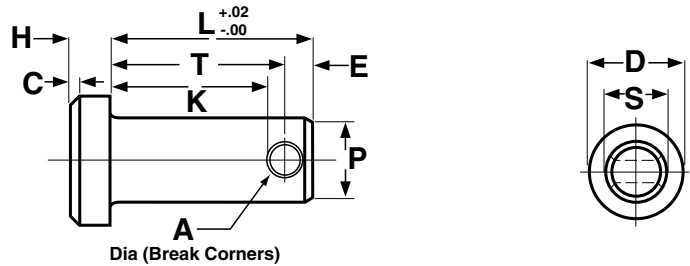




Pins

Clevis Pins



Nominal Size	S		D		H		C	A		P		L	T		E	K	Recommended Cotter Pin Nominal Size
	Shank Diameter		Head Diameter		Head Height		Head Chamfer	Hole Diameter		Point Diameter		Pin Length	Head to Center of Hole		End to Center Ref	Head to Edge of Hole Ref	
	Max	Min	Max	Min	Max	Min	±0.01	Max	Min	Max	Min	Basic	Max	Min	Basic	Min	
3/16	0.186	0.181	0.32	0.30	0.07	0.05	0.02	0.088	0.073	0.15	0.14	0.58	0.504	0.484	0.09	0.440	1/16
1/4	0.248	0.243	0.38	0.36	0.10	0.08	0.03	0.088	0.073	0.21	0.20	0.77	0.692	0.672	0.09	0.628	1/16
5/16	0.311	0.306	0.44	0.42	0.10	0.08	0.03	0.119	0.104	0.26	0.25	0.94	0.832	0.812	0.12	0.752	3/32
3/8	0.373	0.368	0.51	0.49	0.13	0.11	0.03	0.119	0.104	0.33	0.32	1.06	0.958	0.938	0.12	0.878	3/32
7/16	0.436	0.431	0.57	0.55	0.16	0.14	0.04	0.119	0.104	0.39	0.38	1.19	1.082	1.062	0.12	1.002	3/32
1/2	0.496	0.491	0.63	0.61	0.16	0.14	0.04	0.151	0.136	0.44	0.43	1.36	1.223	1.203	0.15	1.127	1/8
5/8	0.621	0.616	0.82	0.80	0.21	0.19	0.06	0.151	0.136	0.56	0.55	1.61	1.473	1.453	0.15	1.377	1/8
3/4	0.746	0.741	0.94	0.92	0.26	0.24	0.07	0.182	0.167	0.68	0.67	1.91	1.739	1.719	0.18	1.628	5/32
7/8	0.871	0.866	1.04	1.02	0.32	0.30	0.09	0.182	0.167	0.80	0.79	2.16	1.989	1.969	0.18	1.878	5/32
1	0.996	0.991	1.19	1.17	0.35	0.33	0.10	0.182	0.167	0.93	0.92	2.41	2.239	2.219	0.18	2.128	5/32

ASME B18.8.1

The value-added source for quality bolts, screws, nuts, washers and other industrial fasteners.

3211 West 9th Street, Trainer, PA 19061-5242 TOLL FREE: 1-800-662-7459 LOCAL: 610-485-5700 FAX: 610-485-5877

E-MAIL: sales@coburnmyers.com