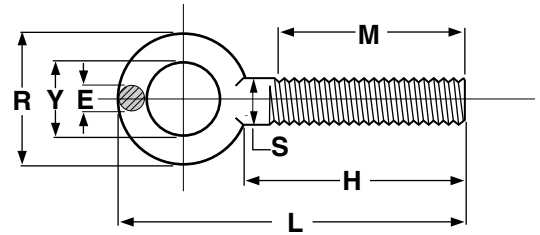


Bolts & Cap Screws

Forged Eye Bolts - Plain Pattern



Nominal Size		S Shank Dia.	H Shank Length		Y Eye ID	R Nominal Eye OD	E Eye Sect. Diameter	L Overall Length	M Min Length Full Thread		Thread Size UNC-2A
			Long Length	Short Length					Long Length	Short Length	
1/4	0.25	0.25	1.00	1.00	0.69	1.19	0.19	2.06	0.75	0.75	1/4-20 or .250-20
		0.28	1.06	1.06							
5/16	0.31	0.31	1.12	1.06	0.81	1.44	0.25	2.44	0.81	0.75	5/16-18 or .3125-18
		0.34	1.19	1.13							
3/8	0.38	0.38	1.25	1.12	0.94	1.69	0.31	2.81	0.88	0.75	3/8-16 or .375-16
		0.41	1.38	1.25							
7/16	0.44	0.44	1.38	1.13	1.00	1.81	0.34	3.06	1.00	0.75	7/16-14 or .4375-14
		0.47	1.50	1.25							
1/2	0.50	0.50	1.50	1.13	1.12	2.12	0.44	3.50	1.12	0.75	1/2-13 or .500-13
		0.53	1.62	1.25							
9/16	0.56	0.56	1.62	1.21	1.19	2.25	0.47	3.75	1.25	0.84	9/16-12 or .5625-12
		0.59	1.75	1.34							
5/8	0.62	0.62	1.75	1.31	1.31	2.56	0.56	4.19	1.38	0.94	5/8-11 or .625-11
		0.66	1.88	1.44							
3/4	0.75	0.75	2.00	1.50	1.44	2.81	0.62	4.69	1.62	1.13	3/4-10 or .750-10
		0.78	2.12	1.62							
7/8	0.88	0.88	2.25	1.75	1.56	3.19	0.75	5.31	1.81	1.31	7/8-9 or .875-9
		0.91	2.38	1.88							
1	1.00	1.00	2.50	1.94	1.69	3.56	0.88	5.94	2.06	1.50	1-8 or 1.000-8
		1.06	2.62	2.06							
1-1/8	1.12	1.12	2.75	2.13	1.94	4.06	1.00	6.69	2.31	1.69	1-1/8-7 or 1.125-7
		1.19	2.88	2.26							
1-1/4	1.25	1.25	3.00	2.38	2.12	4.44	1.09	7.31	2.50	1.88	1-1/4-7 or 1.250-7
		1.34	3.12	2.50							
1-1/2	1.50	1.50	3.50	2.75	2.44	5.19	1.31	8.56	3.00	2.25	1-1/2-6 or 1.500-6
		1.59	3.62	2.87							
1-3/4	1.75	1.75	3.75	3.18	2.75	6.00	1.50	9.50	3.19	2.62	1-3/4-5 or 1.750-5
		1.84	3.88	3.31							
2	2.00	2.00	4.00	3.62	3.06	6.88	1.75	10.56	3.38	3.00	2-4-1/2 or 2.000-4.50
		2.09	4.25	3.87							
2-1/2	2.50	2.50	5.00	4.50	3.81	8.50	2.19	13.19	4.25	3.75	2-1/2-4 or 2.500-4
		2.62	5.25	4.75							

ANSI/ASME B18.15

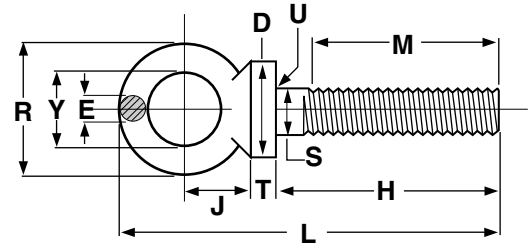
The value-added source for quality bolts, screws, nuts, washers and other industrial fasteners.

3211 West 9th Street, Trainer, PA 19061-5242 TOLL FREE: 1-800-662-7459 LOCAL: 610-485-5700 FAX: 610-485-5877

E-MAIL: sales@coburnmyers.com

Bolts & Cap Screws

Forged Eye Bolts - Shoulder Pattern



Nominal Size	S	H		Y	R	E	L	M		Thread Size UNC-2A	J	D	T	U	
		Shank Length						Eye ID	Nomi-nal Eye OD						Eye Sect. Diam.
		Shank Diam.	Long Length	Short Length	Long Length	Short Length	Center line Eye To Shoulder			Shoulder Diam.	Shoulder Height	Radius Under Shoulder			
1/4	0.25	0.25 0.28	1.00 1.06	1.00 1.06	0.69 0.81	1.19	0.19 0.25	2.22 2.53	0.75	0.75	1/4-20 or .250-20	0.69 0.81	0.50 0.56	0.12 0.19	0.015 0.025
5/16	0.31	0.31 0.34	1.12 1.19	1.06 1.13	0.81 0.94	1.44	0.25 0.31	2.66 2.97	0.81	0.75	5/16-18 or .3125-18	0.88 1.00	0.56 0.62	0.12 0.19	0.015 0.025
3/8	0.38	0.38 0.41	1.25 1.38	1.12 1.25	0.94 1.06	1.69	0.31 0.38	3.09 3.47	0.88	0.75	3/8-16 or .375-16	1.06 1.19	0.62 0.69	0.12 0.19	0.015 0.025
7/16	0.44	0.44 0.47	1.38 1.50	1.13 1.25	1.00 1.12	1.81	0.34 0.41	3.41 3.78	1.00	0.75	7/16-14 or .4375-14	1.19 1.31	0.75 0.81	0.19 0.25	0.015 0.025
1/2	0.50	0.50 0.53	1.50 1.62	1.13 1.25	1.12 1.25	2.12	0.44 0.50	3.81 4.19	1.12	0.75	1/2-13 or .500-13	1.31 1.44	0.88 0.94	0.19 0.25	0.015 0.025
9/16	0.56	0.56 0.59	1.62 1.75	1.21 1.34	1.19 1.31	2.25	0.47 0.53	4.19 4.56	1.25	0.84	9/16-12 or .5625-12	1.50 1.62	0.94 1.00	0.22 0.28	0.020 0.045
5/8	0.62	0.62 0.66	1.75 1.88	1.31 1.44	1.31 1.44	2.56	0.56 0.62	4.56 4.94	1.38	0.94	5/8-11 or .625-11	1.59 1.72	1.00 1.06	0.25 0.31	0.020 0.045
3/4	0.75	0.75 0.78	2.00 2.12	1.50 1.62	1.44 1.56	2.81	0.62 0.69	5.06 5.50	1.62	1.12	3/4-10 or .750-10	1.72 1.91	1.12 1.25	0.25 0.31	0.020 0.045
7/8	0.88	0.88 0.91	2.25 2.38	1.75 1.88	1.56 1.69	3.19	0.75 0.81	5.75 6.19	1.81	1.31	7/8-9 or .875-9	2.03 2.22	1.31 1.44	0.31 0.38	0.040 0.065
1	1.00	1.00 1.06	2.50 2.62	1.94 2.06	1.69 1.81	3.56	0.88 0.94	6.44 6.88	2.06	1.50	1-8 or 1.000-8	2.22 2.41	1.50 1.62	0.38 0.44	0.060 0.095
1-1/8	1.12	1.12 1.19	2.75 2.88	2.13 2.26	1.94 2.06	4.06	1.00 1.06	7.31 7.75	2.31	1.69	1-1/8-7 or 1.125-7	2.59 2.78	1.69 1.81	0.44 0.50	0.060 0.095
1-1/4	1.25	1.25 1.34	3.00 3.12	2.38 2.50	2.12 2.25	4.44	1.09 1.16	8.00 8.44	2.50	1.88	1-1/4-7 or 1.250-7	2.84 3.03	1.88 2.00	0.50 0.56	0.060 0.095
1-1/2	1.50	1.50 1.59	3.50 3.62	2.75 2.87	2.44 2.56	5.19	1.31 1.38	9.22 9.72	3.00	2.25	1-1/2-6 or 1.500-6	3.19 3.44	2.12 2.25	0.50 0.62	0.060 0.095
1-3/4	1.75	1.75 1.84	3.75 3.88	3.18 3.31	2.75 3.00	6.00	1.50 1.62	10.50 11.12	3.19	2.62	1-3/4-5 or 1.750-5	3.88 4.12	2.50 2.62	0.50 0.62	0.060 0.095
2	2.00	2.00 2.09	4.00 4.12	3.62 3.79	3.06 3.44	6.88	1.75 1.88	11.53 12.22	3.38	3.00	2-4-1/2 or 2.000-4.50	4.25 4.50	2.88 3.00	0.62 0.75	0.060 0.095

ANSI/ASME B18.15

The value-added source for quality bolts, screws, nuts, washers and other industrial fasteners.

3211 West 9th Street, Trainer, PA 19061-5242 TOLL FREE: 1-800-662-7459 LOCAL: 610-485-5700 FAX: 610-485-5877

E-MAIL: sales@coburnmyers.com