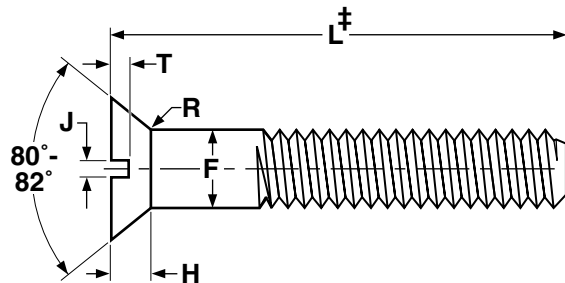


Bolts & Cap Screws

Slotted Flat Cap Screws



Nominal Size or Basic Screw Diameter		F		A		H	J		T		R	C		B
		Body Diameter		Head Diameter		Head Height	Slot Width		Slot Depth		Fillet Radius	Protrusion Above Gaging Diameter		
		Max	Min	Max, Edge Sharp	Min, Edge Rounded or Flat	Ref	Max	Min	Max	Min	Max	Max	Min	
1/2	0.5000	0.5000	0.4930	0.875	0.791	0.210	0.106	0.091	0.103	0.068	0.200	0.071	0.049	0.756
5/8	0.6250	0.6250	0.6170	1.125	1.020	0.281	0.133	0.116	0.137	0.091	0.250	0.085	0.058	0.982
3/4	0.7500	0.7500	0.7420	1.375	1.251	0.352	0.149	0.131	0.171	0.115	0.300	0.099	0.068	1.208
Tolerance on Length		Nominal Screw Size		Nominal Screw Length										
				Up to 1 in., incl.		Over 1 to 2-1/2 in., incl.		Over 2-1/2 to 6 in., incl.						
		1/2 thru 3/4		-0.03		-0.06		-0.08						

ANSI B18.6.2

‡Length of a flat head cap screw is measured from the top of the head to the extreme end of the screw.

The value-added source for quality bolts, screws, nuts, washers and other industrial fasteners.

3211 West 9th Street, Trainer, PA 19061-5242 TOLL FREE: 1-800-662-7459 LOCAL: 610-485-5700 FAX: 610-485-5877

E-MAIL: sales@coburnmyers.com